



We're saving a place for you.



**Earl Poole
Sanctuary**
NATURE PRESERVE & TRAILS

Earl Poole Sanctuary is a 30+ acre Conservancy-owned property and is the result of a generous land donation in the late 70's. The site is located in the Antietam Creek Watershed and is managed for wildlife. It includes a barn, trails, wooded areas, a stream, picnic areas, and is a popular birding site. We look forward to sharing this special place with you to introduce you to the native wildflowers, birds, and insects that call our property "home".

We offer regular educational nature walks at the Earl Poole Sanctuary. Call our office for more information 610-372-4992, and please utilize our trail map and directions when you visit the property on your own.

We're saving a place for you.



The Berks County Conservancy is a 501(c)(3) conservation organization that has been serving the Berks County community since 1974. The Berks County Conservancy works with landowners to permanently protect land from development; townships and boroughs on zoning issues; developers to promote smart growth in Berks; and we own and manage thousands of acres. We support urban revitalization and adaptive reuse of historic buildings, such as the building we call home – the historic WaterWorks Building in the City of Reading. We have developed partnerships to support urban greening efforts like the Berks Urban Greening Community Gardening Program. We lead the Greater Reading Trails Partnership which focuses on the connection of urban and suburban trails and greenway hubs.

Our members are the voices of our communities. Our programs are a direct reflection of what is important to you – the parent, farmer, student, recreational athlete, outdoor enthusiast, naturalist, business owner, educator, sportsman – or any Berks County native, resident or friend. Whether the focus is on the quality of streams and lakes, wetland improvement projects, land protection, or working with our partners to ensure that the water entering our drinking water reservoirs is safe – together we can make a difference.

Enjoy your visit and please remember to support the Berks County Conservancy with a contribution today!

Berks County Conservancy
25 North 11th Street
Reading, PA 19601
610-372-4992
www.berks-conservancy.org

Special Thanks

The Berks County Conservancy is grateful for the support of the William Penn Foundation. They have helped to make our Greater Reading Trail projects and partnerships a great success.





Wildlife Management at Earl Poole Sanctuary

The Earl Poole Sanctuary includes a variety of habitats for wildlife - including woodlands, meadows and successional fields. Invasive plants have been replaced with native species of shrubs, trees and wildflowers to encourage indigenous birds and wildlife. The sanctuary is a headwater of the Antietam Creek providing cool source water downstream into Antietam Lake in Lower Alsace Township. Birdwatchers can spot numerous species at Earl Poole Sanctuary, including the Scarlet Tanager, Downy Woodpecker, Baltimore Oriole, Wood Thrush and Towhee. Seasonal pools serve as breeding grounds for amphibians such as the Wood Frog.

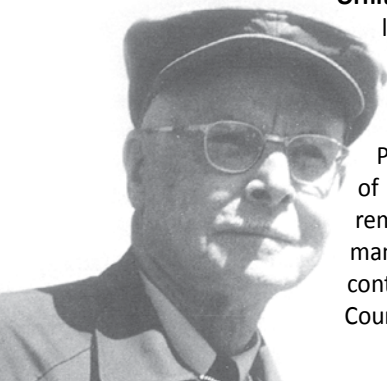


About Dr. Earl L. Poole

This natural area sanctuary has been named in honor of Dr. Earl L. Poole (1891-1972) famed ornithologist and artist. Dr. Poole's illustrations have graced the pages of many books and endeared the peering eyes of many to the birds of Berks County. Dr. Poole was an artist, scientist, teacher, and author. Examples of his illustrations are shown here and on the cover of this trail guide.



In 1930, Poole wrote *The Bird Life of Berks County, Pennsylvania* and in 1932 he wrote *A Survey of the Mammals of Berks County*. Poole was one of the founders of the **Baird Ornithological Club**, still active locally today. In 1947, Poole's *A Half Century of Bird Life in Berks County* was published by the Reading Public Museum. Poole passed away at the age of 80 on July 9, 1972. He will be remembered as a quiet gifted man who made innumerable contributions to science in Berks County and all over the world.



Directions to Earl Poole Sanctuary

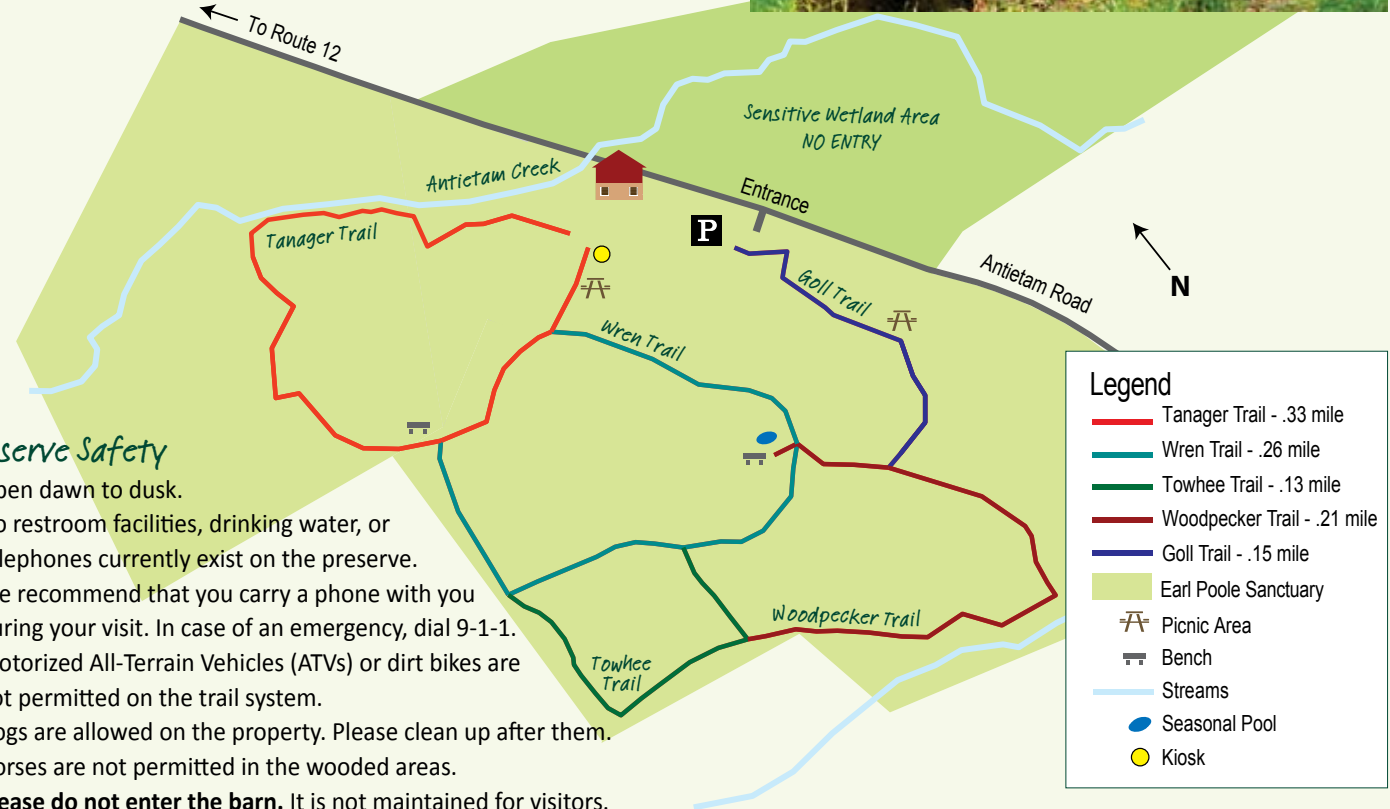
Antietam Road, Alsace Township
From Pricetown Road (Route 12):

Enter Antietam Road (across from Giannotti's Restaurant) next to Alsace Manor Fire Company and travel 1.2 miles to the Earl Poole Sanctuary. Entrance will be on your right, across from the Berks County Conservancy sign, between Beckers Road and Blankenbiller Road.

From Lower Alsace/Mount Penn region:

Follow Antietam Road north into Alsace Township. The Earl Poole Sanctuary will be on your left, across from the Berks County Conservancy sign, 0.7 mile from the intersection of Antietam Road, Basket Road, and Church Hill Road.

An unlocked chained gate is at the entrance of the preserve. You can unhook the chain to park your car. Please rehook the chain when you leave to prevent vandalism and illegal dumping.



Preserve Safety

- Open dawn to dusk.
- No restroom facilities, drinking water, or telephones currently exist on the preserve.
- We recommend that you carry a phone with you during your visit. In case of an emergency, dial 9-1-1.
- Motorized All-Terrain Vehicles (ATVs) or dirt bikes are not permitted on the trail system.
- Dogs are allowed on the property. Please clean up after them.
- Horses are not permitted in the wooded areas.
- **Please do not enter the barn.** It is not maintained for visitors.

The Preserve's History



The rich soils of the Earl Poole Sanctuary property provided a successful working farm and apple orchard. The farm sold vinegar, cider, potatoes, eggs and butter. The only building that remains from the farming days is the barn. The cider press was removed in 2003 and given to a local business in Bowers, PA that utilizes it in a cider making business.

